

THE SCHOOL DISTRICT OF OSCEOLA COUNTY, FLORIDA

817 Bill Beck Boulevard • Kissimmee • Florida 34744-4492
Phone: 407-870-4600 • Fax: 407-870-4010 • www.osceolaschools.net

SCHOOL BOARD MEMBERS

District 1 – Teresa “Terry” Castillo – Vice Chair
407-577-5022
District 2 – Julius Melendez
321-442-2862
District 3 – Jon Arguello
407-433-9082
District 4 – Clarence Thacker - Chair
407-870-4009
District 5 – Robert Bass
407-870-4009



Superintendent of Schools

Dr. Debra P. Pace

Agenda

Business Advisory Board Meeting
@ The Bill Collins Conference Room
817 Bill Beck Boulevard
Kissimmee, FL 34744

Via WebEx
Meeting Details on next page

Wednesday, January 20, 2021
7:30 A.M.

1. Approve Minutes of December 2, 2020
2. Review Impact Fee & Sales Tax Report
3. Budget Update
4. Facilities Update
5. Next regular meeting: February 24, 2021

Business Advisory Board WebEx Meeting Information

Meeting link:

<https://osceolaschools.webex.com/osceolaschools/j.php?MTID=mf9b14251b27b285ceb50f0d142ba90c9>

Meeting number:

179 335 4511

Password:

F2TnbKQvx36

Host key:

965261

More ways to join

Join by video system

Dial 1793354511@osceolaschools.webex.com

You can also dial 173.243.2.68 and enter your meeting number.

Join by phone

+1-408-418-9388 United States Toll

Access code: 179 335 4511

BUSINESS ADVISORY BOARD MINUTES
DECEMBER 2, 2020

Members Present: Shawn Hindle, Mel Welch, Turner Wallis, and Clyde Wells

Others/Guests: Dr. Debra Pace, Sarah Graber, Marc Clinch, Mark Lockard, Randy Shuttera, Rhonda Blake, Maribel Vallellanes, and Luz Skerrett

Location: Bill Collins Conference Room and via WebEx

Mr. Welch called the meeting to order.

Introductions

- **Minutes**

The minutes from the October 28, 2020, meeting were approved with all ayes.

- **Superintendent**

Dr. Pace mentioned that a Facilities Workshop was held on December 1st. She stated that a school board workshop to go over the impact fee study process has been scheduled for January 12, 2021.

Superintendent Pace updated the Board on Governor DeSantis and Education Commissioner Richard Corcoran's visit to Boggy Creek Elementary School on Tuesday, December 1st. She discussed the district's *Ready. Set. Restart!* plan for second semester.

There was discussion on anticipated funding implications to districts for the current school year and the 2021-2022 school year.

Mr. Shawn Hindle asked about a potential property purchase in the Poinciana area which was discussed at the Facilities Workshop. There was discussion on the property and suggestions from the BAB member.

- **Facilities Update & Planning Department**

Mr. Clinch presented a Planning Department update on several potential school sites and transportation sites on the east and west side of the county. Rhonda Blake mentioned that the District is looking at another school site within the 10 year plan.

Mr. Clinch and Mr. Lockard presented and reviewed various projects in design and construction. Mr. Lockard provided pictures on the progress of the comprehensive renovations at St. Cloud Middle, Osceola Virtual School, Canoe Creek K-8, and the Osceola Business Academy at Poinciana High School.

BUSINESS ADVISORY BOARD MINUTES
DECEMBER 2, 2020

- **Impact Fee and Sales Tax Reports**

Maribel Vallellanes reviewed the Impact Fee & Sales Tax Reports as of October 31, 2020.

Impact Fee Revenues

Collections approx. **\$ 24.9M**
Previous Year Decrease \$ 6.4M

Impact Fee Expenditures

FYTD Expenditures Approx. **\$ 2M**
Majority Canoe Creek K-8 &
Osceola Business Academy

Impact Fee Credits

Balance **\$ 13,475** outstanding

Infrastructure Sales Surtax Revenue

Collections approx. **\$ 4.6M**
Previous Year Decrease \$ 836,000K

Infrastructure Sales Surtax Expenditures (1/4 cent)

Approx. spent for FYTD **\$ 873,230**

School Capital Outlay Surtax Revenue

Collections approx. **\$ 9.2M**
Previous Year Decrease \$ 1.6M

School Capital Outlay Surtax Expenditures (1/2 cent)

FYTD Expenditures approx.: **\$ 12.8M**

There was discussion on filling the School District's vacancies on the Business Advisory Board.

BAB Meeting Dates

The Business Advisory Board has agreed to meet the 4th Wednesday of every month. Due to scheduling conflicts, the Board approved the next meeting to be held on Wednesday, January 20, 2021 at 7:30 a.m. in the Bill Collins Conference Room and via WebEx.

**SDOC Business Advisory Board
Impact Fee Revenue
For the period ended 11/30/2020**

MONTH	Fiscal Year							
	2017 - 2018		2018 - 2019		2019 - 2020		2020 - 2021	
	Revenue	Units*	Revenue	Units*	Revenue	Units*	Revenue	Units*
July	\$ 3,197,541	375	\$ 2,385,492	267	\$ 10,863,004	1,123	\$ 6,324,659	675
August	2,963,407	313	4,726,773	488	5,697,497	628	6,155,126	586
September	2,987,439	296	7,804,166		7,885,645	797	5,030,351	541
October	2,076,217	216	7,679,304	713	6,923,523	731	7,071,236	887
November	2,942,186	295	9,018,833	952	5,858,840	584	4,633,389	492
December	4,902,215	635	6,132,620	610	5,076,853	560		
January	3,566,327	439	4,893,678	483	4,668,053	547		
February	1,180,911	118	6,609,701	685	4,722,382	458		
March	2,624,898	288	6,213,597	610	7,787,661	837		
April	3,044,872	328	6,268,996	635	7,099,622	633		
May	4,807,734	420	6,613,496	706	3,627,116	378		
June**	6,212,200	645	6,062,604	621	4,177,704	481		
TOTAL	\$ 40,505,947	4,368	\$ 74,409,260	6,770	\$ 74,387,899	7,757	\$ 29,214,761	3,181

Number of Units Detail				
Type of dwelling	Total Units	Osceola County	City of Kissimmee	City of St Cloud
Single Family	300	205	10	85
Single Family-S/T rental	19	19		
Single Family-Credits	9		9	
Townhomes	18		12	6
Townhomes-S/T rental	8	8		
Condominiums	58	58		
Multifamily	77	77		
Mobile Homes	3	3		
Total	492	370	31	91

*Number of Units as computed based on reports received by the City of Kissimmee, City of St. Cloud, and Osceola County
**Accrual

Budget	
Final Budget: Revenue	\$ 50,000,000

**SDOC Business Advisory Board
Impact Fee Expenditures
For the period ended 11/30/2020**

PROJECT NAME	Fiscal Year			
	2017 - 2018	2018 - 2019	2019 - 2020	2020 - 2021
Debt Service	\$ -	\$ -	\$ -	\$ -
Other:				
Buses	849,052	1,850,948	822,176	113,116
Canoe Creek K-8			1,167,050	2,201,052
Celebration Island Village		709,005	40,856	
Discovery Intermediate Space Reconfiguration	633,528			
Harmony Middle School - "Middle School AA"	7,502,242	26,882,586	2,607,661	36,192
Kindred K-8		2,125		
NeoCity Academy	631,489	13,936,386	2,578,168	
Poinciana High School Wing Addition	1,910,466		6,023,094	1,293,006
Tohopekaliga High School	50,803,419	8,587,940	113,141	6,000
Westside K-8 Renovation	702,517			
Subtotal Other:	\$ 63,032,713	\$ 51,968,990	\$ 13,352,146	\$ 3,649,366
TOTAL	\$ 63,032,713	\$ 51,968,990	\$ 13,352,146	\$ 3,649,366

**SDOC Business Advisory Board
Outstanding Impact Fee Credits
For the period ended 11/30/2020**

Entity	Beg. Balance	Issued	Ending Balance
Celebration-Mattamy	12,879,266	-	12,879,266
Flora Ridge/ICI	2,000,000	1,905,254	94,746
TOTAL	\$ 14,879,266	\$ 1,905,254	\$ 12,974,012

**SDOC Business Advisory Board
School Capital Outlay Surtax Revenue (1/2 Cent)
For the period ended 11/30/2020**

MONTH	Fiscal Year			
	2017 - 2018	2018 - 2019	2019 - 2020	2020 - 2021
July	\$ 2,859,082	\$ 3,247,344	\$ 3,306,679	\$ 2,707,399
August	2,194,580	2,362,698	2,454,871	1,882,705
September	2,154,461	2,107,519	2,186,347	1,675,718
October	2,664,318	2,906,958	2,945,535	2,964,929
November	2,083,815	2,183,394	2,346,396	1,911,260
December	2,206,964	2,252,301	2,355,790	
January	3,339,209	3,545,302	3,683,419	
February	2,495,202	2,281,362	2,446,420	
March	2,066,220	2,321,866	2,474,997	
April	3,596,735	3,750,979	2,812,989	
May	2,354,643	2,496,898	1,116,246	
June*	2,207,039	2,420,032	1,461,649	
TOTAL	\$ 30,222,267	\$ 31,876,654	\$ 29,591,338	\$ 11,142,011

Budget	
Final Budget: Forecasted Revenue	\$ 29,070,602

*Accrual

**SDOC Business Advisory Board
Infrastructure Sales Surtax Revenue (1/4 Cent)
For the period ended 11/30/2020**

MONTH	Fiscal Year			
	2017 - 2018	2018 - 2019	2019 - 2020	2020 - 2021
July	\$ 1,432,353	\$ 1,626,416	\$ 1,653,542	\$ 1,353,919
August	1,101,673	1,187,951	1,229,646	940,105
September	1,081,142	1,051,985	1,094,544	838,579
October	1,366,944	1,460,827	1,473,660	1,482,953
November	1,044,372	1,094,073	1,173,745	954,858
December	1,132,027	1,128,780	1,179,052	
January	1,649,693	1,774,559	1,842,450	
February	1,248,395	1,141,399	1,224,039	
March	1,039,021	1,164,505	1,237,741	
April	1,799,463	1,876,971	1,406,608	
May	1,179,008	1,251,681	558,604	
June*	1,107,946	1,213,361	731,997	
TOTAL	\$ 15,182,037	\$ 15,972,508	\$ 14,805,628	\$ 5,570,414

Budget	
Final Budget: Forecasted Revenue	\$ 14,535,301

*Accrual

**SDOC Business Advisory Board
School Capital Outlay Surtax Expenditures (1/2 Cent)
For the period ended 11/30/2020**

Type of Expenditure	Fiscal Year			
	2017-2018	2018-2019	2019-2020	2020-2021
Debt Service	\$ 2,117,995	\$ 7,037,194	\$ 7,035,848	\$ 6,107,499
Comprehensive Renovations:				
Denn John Middle School	1,318,044	22,605,913	11,114,867	1,021,141
Gateway High School		71,765	388	479
Michigan Avenue Elementary School	6,132,009	19,720,411	1,639,336	20,950
St. Cloud Middle School	11,319	2,417,580	23,942,794	1,861,549
Subtotal Comprehensive Renovations	\$ 7,461,372	\$ 44,815,669	\$ 36,697,385	\$ 2,904,119
Other maintenance & renovation projects:				
Carpet Replacements/Flooring:				
Adult Learning Center	\$ -	\$ -	\$ -	\$ 36,153
Boggy Creek Elementary School	-	-	11,125.00	
Celebration High School	113,225.00			
Cypress Elementary School				36,132
Deerwood Elementary School			455,336	
Discovery Intermediate School		93,668	54,027	
East Lake Elementary School			42,221	
Gateway High School	56,883			
Kissimmee Middle School				71,809
KOA Elementary			139,245	121,443
Narcoossee Middle School	25,400			
Neptune Middle School	325,215			16,107
Parkway Middle School		149,780	139,035	
Pleasant Hill Elementary School	320,741			
Poinciana Academy of Fine Arts	94,691	33,125		
Reedy Creek Elementary School	343			
Ross E. Jeffries Campus		53,648		
St Cloud Elementary			142	291,195
Sunrise Elementary School			265,345	43,314
Westside K-8			1,493	
Zenith		20,758		31,075
Chiller Replacements:				
Celebration K-8 School	688,956			
Celebration High School			1,068,923	232,029
Central Elementary School			19,249	222,411
Cypress Elementary School			214,067	391
Discovery Intermediate School			223,357	
Flora Ridge Elementary School			235,421	266,382
Horizon Middle School	83,172		205,514	
Kissimmee Elementary School		188,032	251,506	
Kissimmee Middle School	147,998	66,254		
Liberty High School		84,497	187,192	
Partin Settlement Elementary School				13,610
Poinciana Academy of Fine Arts		302,758	254,165	
Poinciana High School	96,113	4,695	2,644,442	106,518
Fencing:				
Boggy Creek Elementary School	3,114	2,221		
Celebration High School	740	833		
Celebration K-8 School		27,030		
Central Elementary School	2,807	8,952	557	
Cypress Elementary School			5,354	
Deerwood Elementary School			25,314	
East Lake Elementary School			41,773	
Flora Ridge Elementary School			29,083	
Gateway High School		12,815		
Harmony Community School		33,086		
Harmony High School	2,645	12,083	23,152	
Hickory Tree Elementary School		24,664		
Highlands Elementary	1,852	57,099	16,449	
Horizon Middle School		16,820		

**SDOC Business Advisory Board
School Capital Outlay Surtax Expenditures (1/2 Cent)
For the period ended 11/30/2020**

Type of Expenditure	Fiscal Year			
	2017-2018	2018-2019	2019-2020	2020-2021
Kissimmee Middle School				1,671
Lakeview Elementary School	1,756	53	42,148	2,548
Liberty High School		16,194		
Michigan Avenue Elementary School				2,185
Mill Creek Elementary			23,026	98
Narcoossee Middle School	3,072	2,160		
Neptune Middle School	48,596			
Parkway Middle School				1,886
PATHS			45,404	
Pleasant Hill Elementary School			2,251	
Poinciana Elementary School			27,326	
Poinciana High School		15,558		
Reedy Creek Elementary School		25,703	4,003	1,947
Ross E. Jeffries Campus		42,173	375	
St. Cloud High School	10,900	107		
Sunrise Elementary School	6,568			
Tohopekaliga High School			16,544	
Westside K-8		36,355	913	
Zenith		4,787		
Fire Alarms:				
Partin Settlement Elementary School				
Poinciana Academy of Fine Arts	23,776			
HVAC Repairs/Replacements:				
Celebration High School	148,219	56,322		
Celebration K-8 School		162,939	4,924	
Cypress Elementary School			7,894	
Deerwood Elementary School			7,758	
Discovery Intermediate School	281,578			
Harmony High School		3,162	4,478	
Horizon Middle School			152,730	
Kissimmee Elementary School	119,882	20,586		
Kissimmee Middle School		66,487	152,541	
Liberty High School		117,555	35,347	3,006
Narcoossee Middle School		100,827		
Neptune Middle School	8,793	3,002		
oTECH	7,482	60,133		35,865
Ross E. Jeffries Campus	6,040	1,371	23,822	
Ventura Elementary School				38,971
Painting and/or other projects (lighting, fans, windows)				
ALCO		7,616	10,915	
Celebration High School		18,685	184,120	
Celebration K-8 School	3,553	21,296	47,509	
Central Elementary School	55,858			
Chestnut Elementary School	22,930			
Cypress Elementary School	25,761		41,882	85,701
Deerwood Elementary School		52,714	47,301	
Discovery Intermediate School	99,037	114,620		
East Lake Elementary School			40,144	9
Gateway High School	12,971	757		
Harmony Community School	39,935			
Harmony High School	66,648	17,710		
Hickory Tree Elementary School	72,440	21,668		
Horizon Middle School	56,091	18,138	41,517	
Kissimme Elementary School	32,467		72,387	
Kissimmee Middle School	50,630	217,910		64,550
KOA Elementary	45,486		35,446	31,806
Lakeview Elementary School	1,613			
Liberty High School	136,128	18,685		
Mill Creek Elementary			43,198	53,907
Narcoossee Elementary School	44,500			
Narcoossee Middle School	129,279	21,828	64,586	
Neptune Elementary School	33,755			

**SDOC Business Advisory Board
School Capital Outlay Surtax Expenditures (1/2 Cent)
For the period ended 11/30/2020**

Type of Expenditure	Fiscal Year			
	2017-2018	2018-2019	2019-2020	2020-2021
Neptune Middle School	8,700			
New Beginnings	24,187			
Osceola High School		18,685		9,000
Osceola County School for the Arts		89,688		
oTECH			19,898	
Parkway Middle School	22,905		44,462	
Partin Settlement Elementary School	1,649			
Pleasant Hill Elementary School	80,632			7,951
Poinciana Academy of Fine Arts	23,284			
Poinciana High School		13,333	247,884	1,193,878
Reedy Creek Elementary School		32,012		13,489
Ross E. Jeffries Campus	6,495			
St. Cloud Elementary School	26,774		67,113	
St. Cloud High School				162,424
Sunrise Elementary School	74,684		225	61,352
Ventura Elementary School	123,984		60,702	
Westside K-8		86,808		
Parking Lot Resurface / Bus Loop / Concrete/Drainage:				
Boggy Creek Elementary School	80,052			
Central Elementary School			8,429	6,707
Chestnut Elementary	6,818			
Countywide			7,929	
Deerwood Elementary School			19,712	
Discovery Intermediate School				
Harmony Community School			4,790	
Hickory Tree Elementary School			4,325	
Horizon Middle School			5,540	
Lakeview Elementary School			7,180	105,680
Liberty High School			14,871	
Narcoossee Elementary School			7,035	8,575
Narcoossee Middle School			433	10,675
Osceola High School			15,615	
oTECH			1,850	10,579
Parkway Middle School				7,914
Poinciana Elementary		19,655		
Reedy Creek Elementary School				7,055
Thacker Avenue Elementary		6,648		
Transportation	93,864			
Westside K-8			9,603	
Renovations				
Gateway High School	23,461			
Horizon Middle School			8,023	7,380
Roofing/Gutters/Covered walkways:				
Boggy Creek Elementary School				1,706
Celebration K-8 School	945,999			
Chestnut Elementary		107,400		
Deerwood Elementary School	107,771			
Discovery Intermediate School			9,082	87,473
Gateway High School	19,880			
Hickory Tree Elementary School	883			
Kissimmee Elementary School		500	3,300	
Narcoossee Middle School			11,420	108,896
Neptune Middle School		191,628	131,449	
Partin Settlement Elementary School		117,000		
Poinciana Elementary School		13,075	243,010	
Sunrise Elementary School		109,800		
St Cloud Elementary			59,597	
Safety & Security Equipment	193,808	701,003	519,017	739,125
Security Modifications and improvements	129,378	28,153	89,099	58,132
Technology Infrastructure and equipment	838,476	1,522,770	1,263,694	385,243
Subtotal Other	\$ 6,393,323	\$ 5,518,077	\$ 10,619,263	\$ 4,805,953
TOTAL	\$ 15,972,690	\$ 57,370,940	\$ 54,352,496	\$ 13,817,571

**SDOC Business Advisory Board
Infrastructure Sales Surtax Expenditures (1/4 Cent)
For the period ended 11/30/2020**

Type of Expenditure	Fiscal Year			
	2017-2018	2018-2019	2019-2020	2020-2021
Debt Service	\$ 6,529,728	\$ 6,551,233	\$ 6,561,298	\$ 298,705
Other:				
Athletic Facilities	\$ 6,939	\$ 889	\$ 4,060	\$ -
Buildings	33,477			
Buses	1,970,730	219,747		
Chiller Replacements	544,772			
Remodeling	960,535	859,574	2,463	
Renovations-Canoe Creek			5,464,569	933,143
Student Computers		249,600	118,972	
Site improvements		12,324		
Technology	888	160,573	7,001	
White Fleet	86,400	551,097	879,502	
Subtotal Other:	\$ 3,603,741	\$ 2,053,804	\$ 6,476,567	\$ 933,143
TOTAL	\$ 10,133,469	\$ 8,605,037	\$ 13,037,865	\$ 1,231,848

Facilities Update

Business Advisory Board
January 20, 2021



Every Child, Every Chance, Every Day!



Facilities Update

Agenda

- Planning Update
- Design & Construction Update

Planning Update

Agenda

- OCSA Tri-party Development Agreement
- S. Poinciana Blvd. (aka Knightsbridge K8) Purchase and Sale Agreement
- Southwest Kissimmee Res. Dev., Ham Brown Road – Pleasant Hill Road
- Sunbridge Development – K8 School Site
- Kindred K8 School Site
- Center Lake K8 School Site
- Nova/Newman Purchase and Sale Agreement

Tri-Party Development Agreement

Healthy Way Road and OCSA School Road

- January 12, 2021 – School Board approval of the Tri-Party Development Agreement and Temporary Construction Easement Agreement for Construction of Healthy Way and OCSA School roads
- The Healthy Way Road, the New Bus Loop, OCSA School Road, and the Parent Drop-Off Improvements will result in a more efficient and safer traffic pattern in the area
- Deerfield Land Corporation “DLC” will donate 2.98 acres of land to the School Board for OCSA School Road
- Deerfield Land Corporation “DLC” will be responsible to reimburse the School Board for 50% of the construction costs for Healthy Way Road, payable at the Closing of the first and each succeeding parcel (Replat 33) of land sold by DLC

Tri-Party Development Agreement Healthy Way Road and OCSA School Road



OCSA Bus Route

Mary Louis Lane

Healthy Way

Tri-party Agreement with Tupperware, Osceola County & SDOC

S. Poinciana Boulevard K-8 School Site a/k/a Knightsbridge

- Relief for west and southwest Osceola County
 - WSK-8, RCES, SRES, and HZMS (including but not limited to)
- 61-Acres (42.8-acres of uplands 18.2-acres of wetlands)
 - (Cash purchase and Impact Fee Credits)
- December 1, 2020 – School Board approved Purchase and Sale Agreement
 - Proportionate Share for off-site improvements such as signalization, water & sewer infrastructure, roadway improvements, etc.
- Due Diligence
 - FAA Extension Letter – Updated October 29, 2020
 - TWA Water and Sewer Letter – Updated January 7, 2021
 - Protected Species and Wetlands Assessment – Received January 8, 2021
 - Phase I Environmental Site Assessment – Received January 11, 2021
 - Appraisal – Received January 12, 2021
 - Phase II – Pending
 - Preliminary Geotechnical Pending

S. Poinciana Boulevard K-8 School Site Aerial

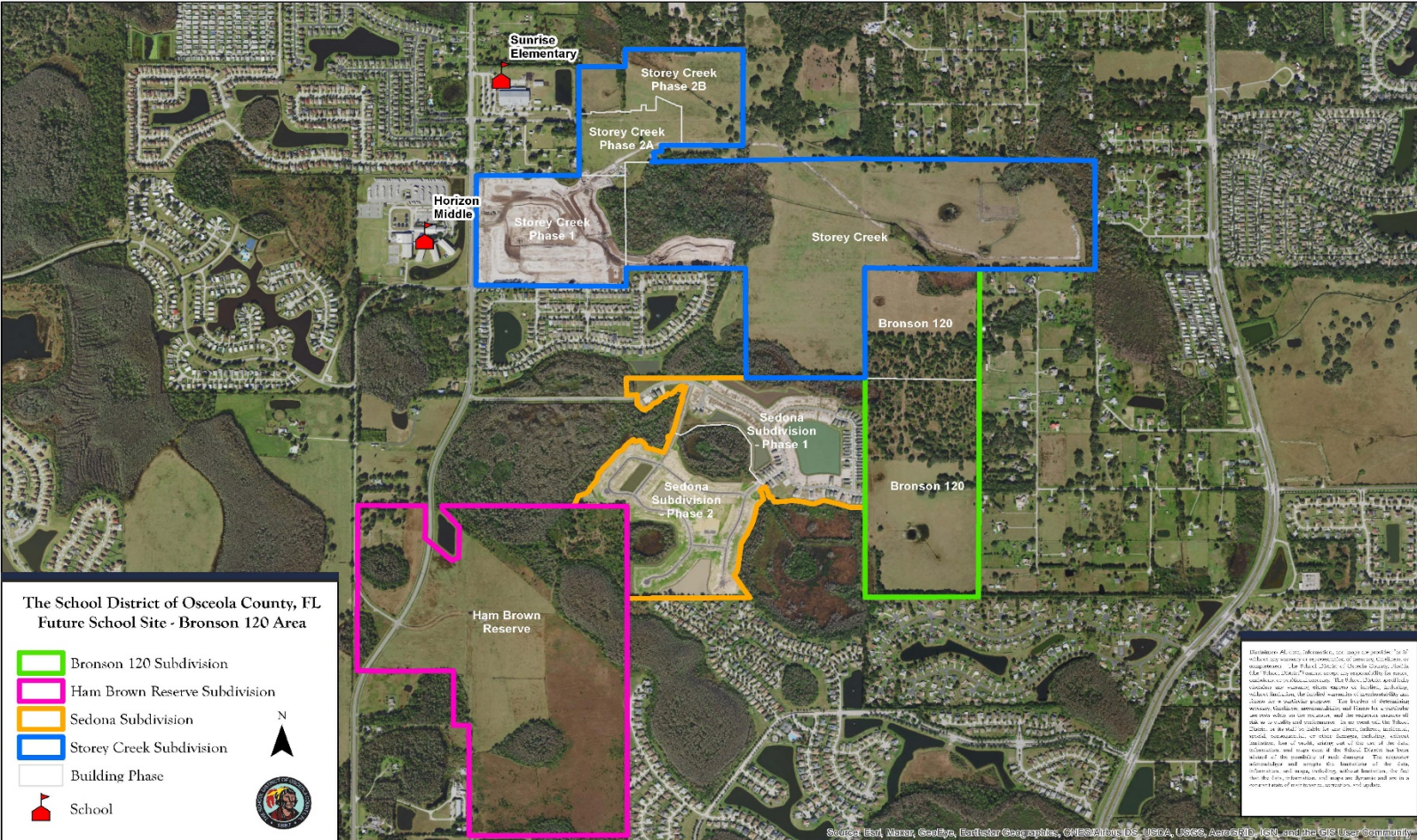
Exhibit A
Purchase and Sale Agreement - S. Poinciana Boulevard
SUBJECT PROPERTY (GREEN) AERIAL PHOTOGRAPH



S. Poinciana Boulevard Residential Development



Southwest Kissimmee Residential Development Ham Brown Road – Pleasant Hill Road



Sunbridge Development

K-8 School Site

- Developer mitigated school capacity based on the approved build-out of 3,198 single family dwelling units of which 1,370 are Del Webb age restricted and 1,434 multi-family dwelling units
 - First of two sites to be conveyed
- Twenty (20) net usable acres
 - The school site is to be buildable at the time of conveyance with the Developer being responsible for all site preparations including, without limitation, all fill, excavation and other site improvements, including clearing and grubbing of the school site, necessary to bring the school site to suitable soil and at grade pursuant to the required SREF standards
 - Conveyance Dates
 - 90-days after the satisfaction of all Contingencies
 - January 12, 2021 - School Board approved School Capacity Mitigation and Funding Agreement
 - Due Diligence to begin no later than February 2021
- 5-Year CIP - 2023/2024 Opening

Kindred K-8 School Site

Kindred f/k/a Toho Preserve

- Developer mitigated school capacity based on the approved build-out of 2,976 single family dwelling units and 693 multi-family dwelling units
- Twenty (20) net usable acres
 - The school site is to be buildable at the time of conveyance with the Developer being responsible for all site preparations including, without limitation, all fill, excavation and other site improvements, including clearing and grubbing of the school site, necessary to bring the school site to suitable soil and at grade pursuant to the required SREF standards
 - Conveyance Dates
 - Original - December 2019
 - Second Amendment - January 2021
 - Third Amendment - August 2021
 - December 15, 2020 – School Board Approval
 - February 8, 2021 – Board of County Commissioners
- 5-Year CIP - 2024/2025 Opening

Center Lake K-8 School Site

- Developer mitigated school capacity based on the approved build-out of 3,140 single family dwelling units and 800 multi-family dwelling units
- Twenty (20) net usable acres
 - The school site is to be buildable at the time of conveyance with the Developer being responsible for all site preparations including, without limitation, all fill, excavation and other site improvements, including clearing and grubbing of the school site, necessary to bring the school site to suitable soil and at grade pursuant to the required SREF standards
 - Conveyance Dates
 - No later than 15-years from the Effective Date of the Agreement, December 15, 2020

Nova Road

- 131 +/- acres of real property located on Nova Road in St. Cloud, FL.
- The property will meet the immediate and long term needs of the School District for ancillary and educational facilities in the eastern portion of Osceola County.
 - A transportation depot in this area which will increase efficiency of the overall operation of the Transportation Department and alleviate 150,000 miles per year on bus “dead head” time with an estimated savings of \$262,500 per year.
 - Due Diligence
 - Protected Species and Wetlands Assessment – Received May 15, 2020
 - Phase I Environmental Site Assessment – Received May 14, 2020
 - Conditional Use Application – Approved by City of St. Cloud City Council, September 10, 2020
 - Phase II – Received September 29, 2020
 - Preliminary Geotechnical – Received January 12, 2021
 - Appraisal – Letter Update Pending

Facilities Update

Agenda

- Design & Construction Department Update

• Projects in Pre-Planning	\$112,030,400
• Projects in Planning	\$42,797,875
• Projects in Design	\$109,841,003
• Projects in Construction	<u>\$74,042,171</u>
• Current Program	\$338,711,449

Projects in Pre-Planning

<u>Project</u>	<u>Budget</u>	<u>Proposed Opening</u>
Harmony HS Re-configuration Center Lake K8	\$430,400	2022-2023
OCSA Bus Loop	\$4,000,000	TBD
Transportation West	\$20,100,000	TBD
Transportation East	\$2,000,000	TBD
Sunbridge K8	\$43,500,000	2023-2024
Westside Relief K8	\$42,000,000	2024-2025
TOTAL	\$112,030,400	

Projects in Planning

<u>Project</u>	<u>Budget</u>	<u>Proposed Opening</u>
Kindred “AA” K-8	\$42,797,875	2024-2025
OCSA Comprehensive Renovation	TBD	2024-2025
RCES Comprehensive Renovation	TBD	2025-2026
TOTAL	\$42,797,875	

Projects In Design

<u>Project</u>	<u>Budget</u>	<u>Construction NTP</u>
Celebration Isle ES	\$27,123,870	TBD
GWHS Comprehensive	\$78,000,000	TBD
NPMS Rear Bus Loop	\$645,000	TBD – On Hold
DAS Emergency Radio Installations (10)	\$665,000	TBD
Secure Lobby Projects (4)	\$400,000	TBD
SNS Roof Replacement	\$456,928	TBD
oTECH CNC/Welding Program	\$2,063,078	TBD
VPK Office Remodel at REJE	\$187,990	TBD
WK8S Network Core Relocation	\$100,000	12/14/2020
Cyclical Capital Projects (5)	\$179,137	Various
KMES Fencing Replacement	\$20,000	1/29/2021
TOTAL	\$109,841,003	

Projects in Construction

<u>Project</u>	<u>Budget</u>	<u>Substantial Completion</u>
ALCO Fencing	\$22,714	1/29/2021
BELA Shade Structure	\$22,112	1/29/2021
BELA Storage Enclosures	\$143,259	3/19/2021
HZMS Air Handler Replacement	\$3,410,696	7/30/2021
KMMS Air Handler Replacement	\$3,404,869	7/30/2021
SCMS Comprehensive Renovation	\$32,973,602	10/12/2020 (Complete)
Osceola Virtual School	\$525,000	1/15/2021
Canoe Creek K8 Year 1	\$1,515,540	10/31/2020 (Complete)
Canoe Creek K8 Year 2	\$30,021,000	12/04/2021
PNHS Campus Wide Lighting	\$1,500,000	3/19/2021
OCHS Bleacher Replacement	\$123,955	1/04/2021 (Complete)
LBHS Track Resurfacing	\$298,727	1/08/2021
Cyclical Capital Projects (5)	\$80,657	Various
TOTAL	\$74,042,171	

St Cloud MS Comprehensive

\$32,973,602



Canoe Creek K-8

\$30,021,000



Osceola Virtual School (OVS)

\$525,000



Every Child, Every Chance, Every Day!



Comments and Discussion